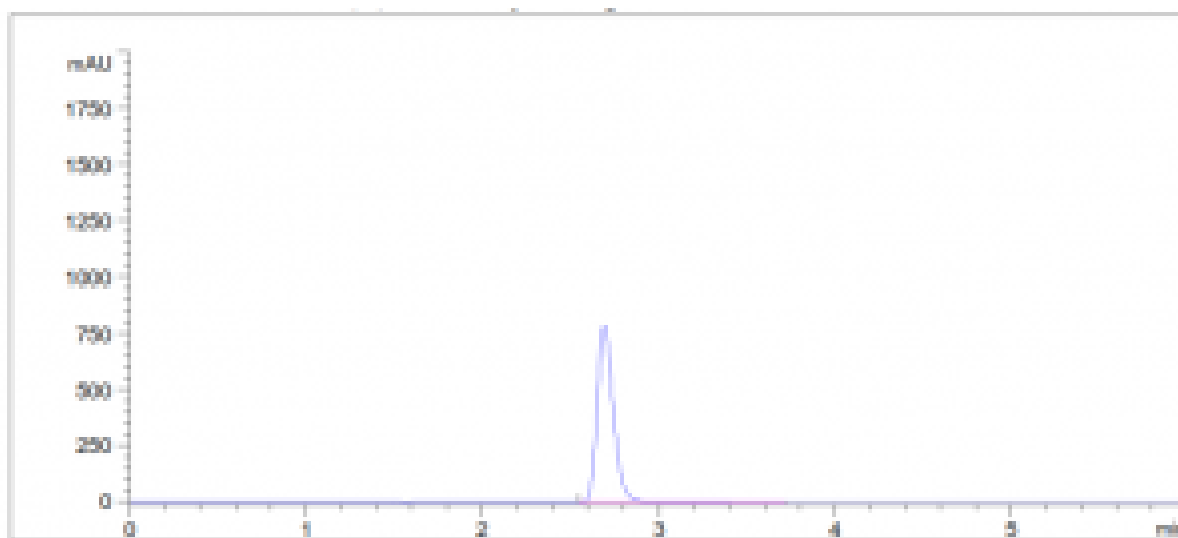


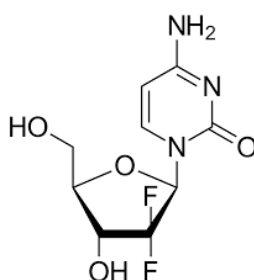
## Gemcitabine Assay Analyzed with HPLC – AppNote

### A Reliable Method for a Chemotherapeutic Drug

This Gemcitabine Assay is easily performed and demonstrates Run to Run consistency and Precision with Retention Time RSD values below 0.4%. This Method shows consistency and reliability for analysis of this Nucleoside Chemotherapeutic.



#### Peak:



Gemcitabine

#### Method Conditions:

**Column:** Cogent RP C8™, 5um, 150Å

**Catalog No.:** [68508-25P](#)

**Dimensions:** 4.6mm x 250mm

**Mobile Phase:** 13.8g of Monobasic Sodium Phosphate and 2.5ml of Phosphoric Acid in 1L of Water.

**Injection vol.:** 20µL

**Flow rate:** 1.2mL / minute

**Detection:** UV @ 275nm

**Sample Preparation:** Gemcitabine 1.0mg / mL in DI Water

**Note:** Gemcitabine is a nucleoside analog and a chemotherapeutic agent. It is used as adjunct therapy in the treatment

*of certain types of ovarian cancer, non-small cell lung carcinoma, metastatic breast cancer, and as a single agent for pancreatic cancer.*

This Method was developed by and is presented courtesy of [ARL- Eutech Scientific Services, Inc.](#)



Printed from the Chrom Resource Center

Copyright 2025, All Rights Apply

**MicroSolv Technology Corporation**

9158 Industrial Blvd. NE, Leland, NC 28451

Tel: (732) 380-8900

Fax: (910) 769-9435

Email: [customers@mtc-usa.com](mailto:customers@mtc-usa.com)

Website: [www.mtc-usa.com](http://www.mtc-usa.com)